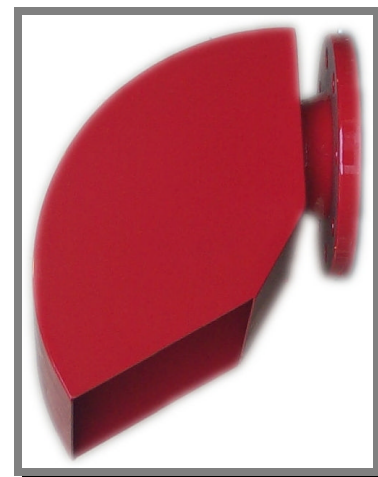
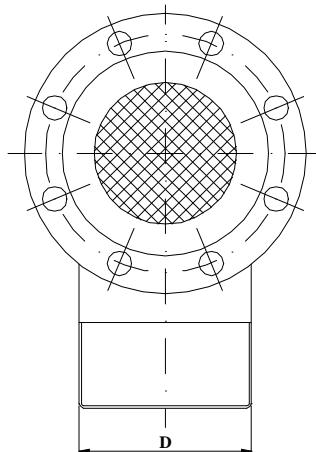
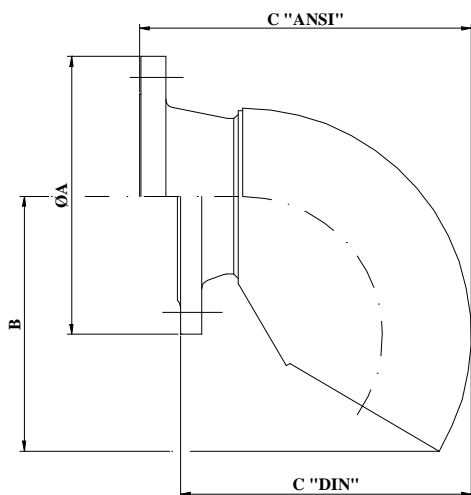




Certified



#### CARATTERISTICHE COSTRUTTIVE

- Corpo in acciaio al carbonio
- Flange in acciaio al carbonio
- Finitura: verniciatura con ciclo epossidico colore rosso (RAL 3000)

#### A RICHIESTA

- Corpo in acciaio inox (AISI 304 / AISI 316)
- Rete di protezione in acciaio inox AISI 316
- Zincatura a caldo
- Flange in acciaio inox (AISI 304 / AISI 316)

#### CONSTRUCTION FEATURES

- *Body material: carbon steel*
- *Flanges material: carbon steel*
- *Finish: red epoxy paint (RAL 3000)*

#### OPTIONAL

- *Body material: stainless steel (AISI 304 / AISI 316)*
- *Strainer material: stainless steel AISI 316*
- *Hot dip galvanized*
- *Flanges material: stainless steel (AISI 304 / AISI 316)*

MOD. MODEL	øA	B	C	C	D	PESO / WEIGHT	PESO / WEIGHT
			VERS. ANSI ANSI VERSION	VERS. DIN / UNI DIN / UNI VERSION		VERS. ANSI ANSI VERSION	VERS. DIN / UNI DIN / UNI VERSION
		mm	mm	Mm	mm	Kg	Kg
VF-2	3"	231	280	260	155	18	16.5
VF-4	4"	231	286	262	155	18	16.5
VF-6	5"	231	299	265	155	19	17.5
VF-8	6"	318	384	350	240	28	26.5
VF-15	8"	318	397	357	240	37	36
VF-20	8"/10"	426	508	473	350	37 - 54	36 - 53
VF-25	12"	426	519	473	350	64	63