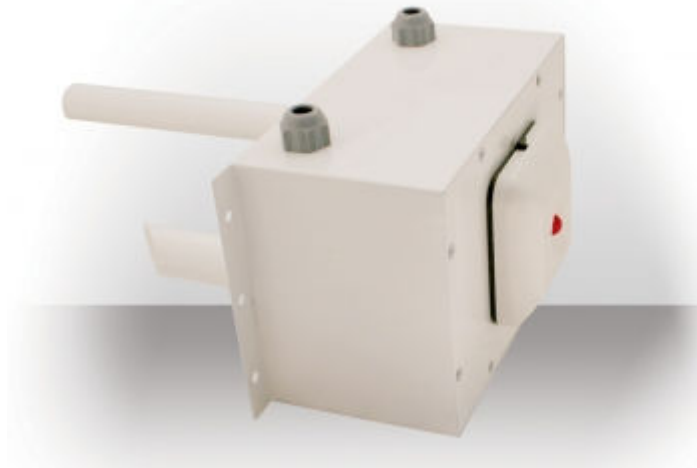




DUCT SMOKE DETECTOR TYPE : YKB-02



Duct smoke detector YKB-02 is designed to detect the presence of smoke in airstream of ductwork sections or ventilating compartments by the smoke detector mounted in it.

Depending on the type of the fire detector mounted, the duct smoke detector is produced in two variants - for Conventional Fire Alarm Systems (YKB-02K) and for Addressable Fire Alarm Systems (YKB-02A).

In the device is mounted an optical-smoke fire detector type FD8030 for Conventional Systems or FD7130 for Addressable Systems.

In order to control the condition of the integrated fire detector, on the housing of the duct smoke detector is mounted an outboard LED Remote Indicator RI31.

In case of smoke in the main air conduit, part of this smoke goes through the duct smoke detector and activates the fire detector. The latter sends signal to the Fire Control Panel and the outboard Remote indicator.

TECHNICAL DATA

System	: Conventional
Supply voltage	: 12-30VDC
Speed of the airflow into the air conduit	: -0,5 ÷ 20 m/s
Existence of a mechanical filter of the input and the output	: yes
Dimensions (without the inlet/outlet tube and the nozzles)	: (200X120X114)mm
Operating temperature range	: -10°C to +55°C
Operating humidity range	: 20-90% at 40°C
Inlet tube dimensions	: Φ22 x 200 mm
Outlet tube dimensions	: Φ22 x 70 mm
Manufacturer	: UNIPOS Ltd
Origin	: European Union